



Majestic



**Majestic** Model number: 58CLA32763JM16

**3 beds • 2 baths • 2432 sq.ft. • 32' width • 76' depth**

Our home building facilities invest in continuous product and process improvements. Plans, dimensions, features, materials, specifications and availability are subject to change without notice or obligation. Renderings and floor plans are representative likenesses of our homes and may differ from the actual homes. We invite you to tour a Home Center near you and inspect the highest value in quality housing available or call (704) 873-2547 to speak with a Home Consultant. Copyright 2017, CMH. All rights reserved.

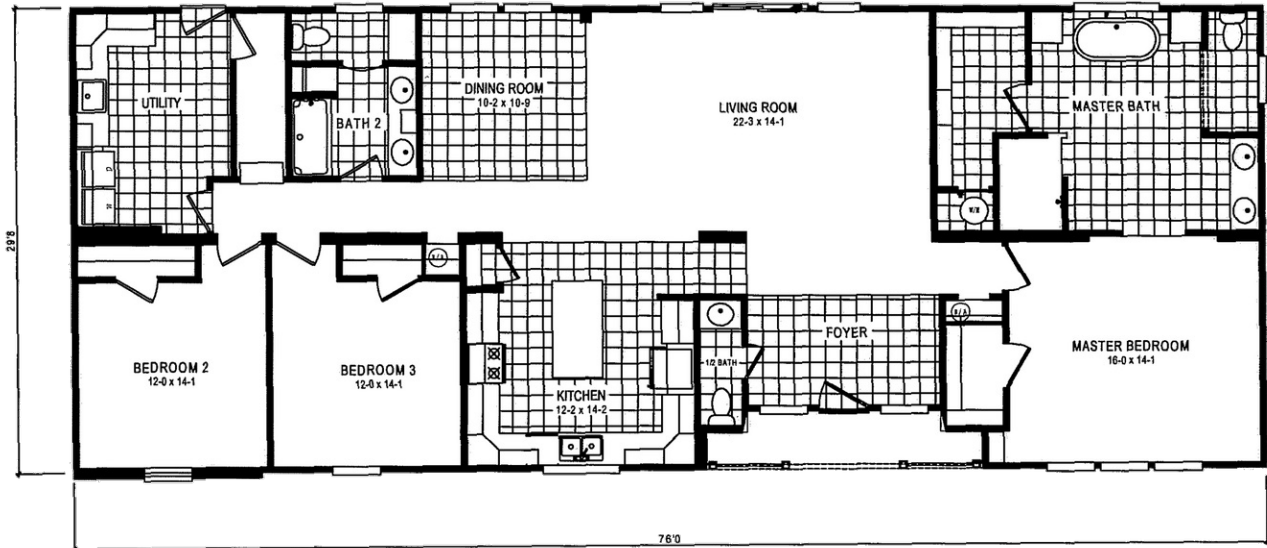
<https://www.claytonhomesofstatesville.com>

**CLAYTON HOMES-  
STATESVILLE**

**2026 NORTHSIDE DR.  
STATESVILLE, NC 28677**

Monday - Thursday: 9am - 7pm  
Friday: 9am - 6pm  
Saturday: 9am - 5pm  
Sunday: Closed

(704) 873-2547



## Majestic Model number: 58CLA32763JM16

**3 beds • 2 baths • 2432 sq.ft. • 32' width • 76' depth**

Our home building facilities invest in continuous product and process improvements. Plans, dimensions, features, materials, specifications and availability are subject to change without notice or obligation. Renderings and floor plans are representative likenesses of our homes and may differ from the actual homes. We invite you to tour a Home Center near you and inspect the highest value in quality housing available or call (704) 873-2547 to speak with a Home Consultant. Copyright 2017, CMH. All rights reserved.

<https://www.claytonhomesofstatesville.com>

### CLAYTON HOMES- STATESVILLE

2026 NORTHSIDE DR.  
STATESVILLE, NC 28677

Monday - Thursday: 9am - 7pm  
Friday: 9am - 6pm  
Saturday: 9am - 5pm  
Sunday: Closed

(704) 873-2547